



SC DEPARTMENT *of*
**ENVIRONMENTAL
SERVICES**

South Carolina Department of Environmental Services Overview – Aiken Environmental Affairs Office



SCDES – Who Are We?

"The **South Carolina Department of Environmental Services (SCDES)** is a team of environmental subject matter experts whose work impacts every South Carolinian, every day. We use science and data to drive our decisions and actions. Our work supports a resilient and sustainable South Carolina, and our efforts safeguard our air, land, water and coasts for generations to come." –SCDES Website



ESOP Overview

- DOE - Funded Grant (Remediation and Environmental Monitoring Grant)
- Monitor the Savannah River Site
- Non-regulatory environmental monitoring
 - Allows DES to review SRS sampling program
 - DES samples provide a second set of data available to the public
- Look for radiological and non-radiological constituents in air, groundwater, drinking water, surface water, sediment, soil, milk, vegetation, fish, and game.

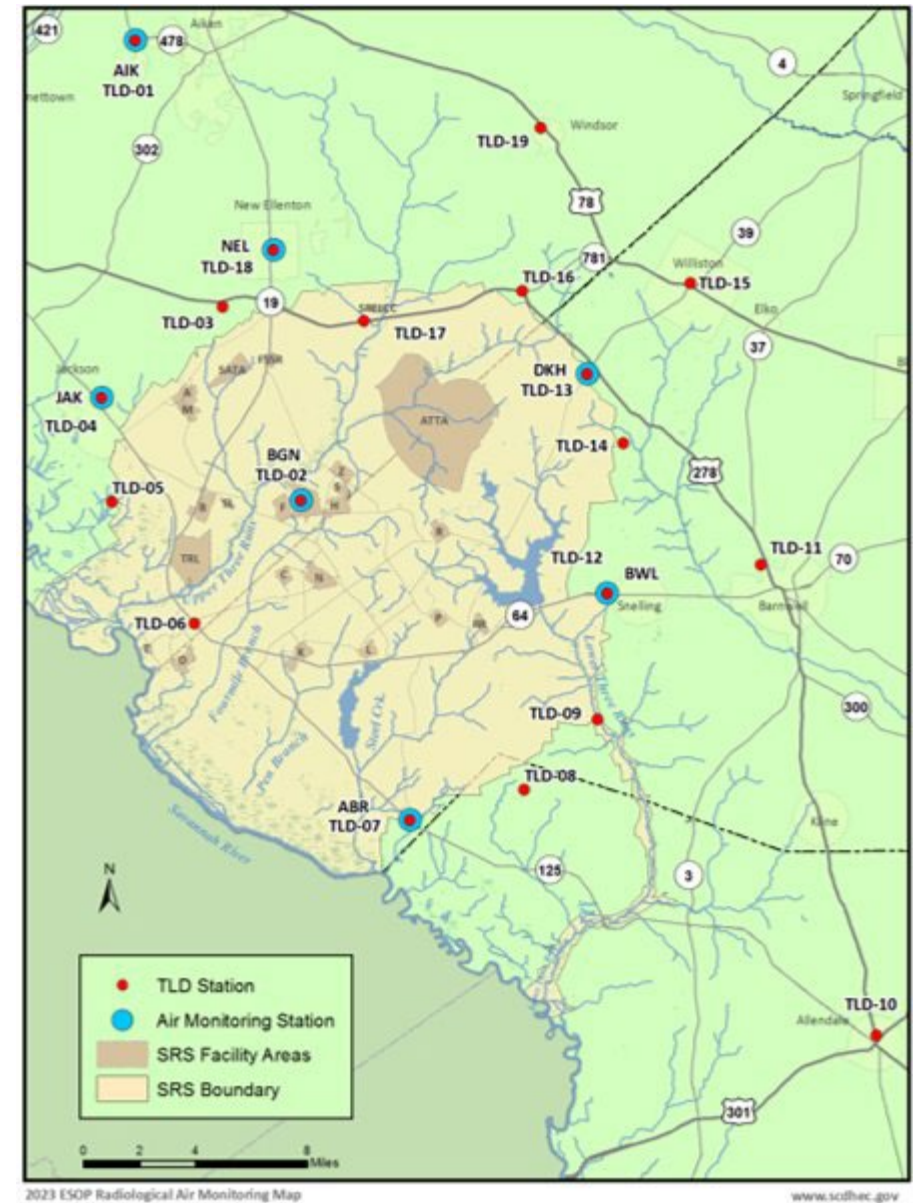
Radiological Atmospheric Monitoring



7 Air Stations

- Particulates
- Precipitation
- Atmospheric Moisture

19 TLD's



Groundwater Monitoring



Radiological Monitoring of Drinking Water Adjacent to the SRS



North Augusta

Drinking Water



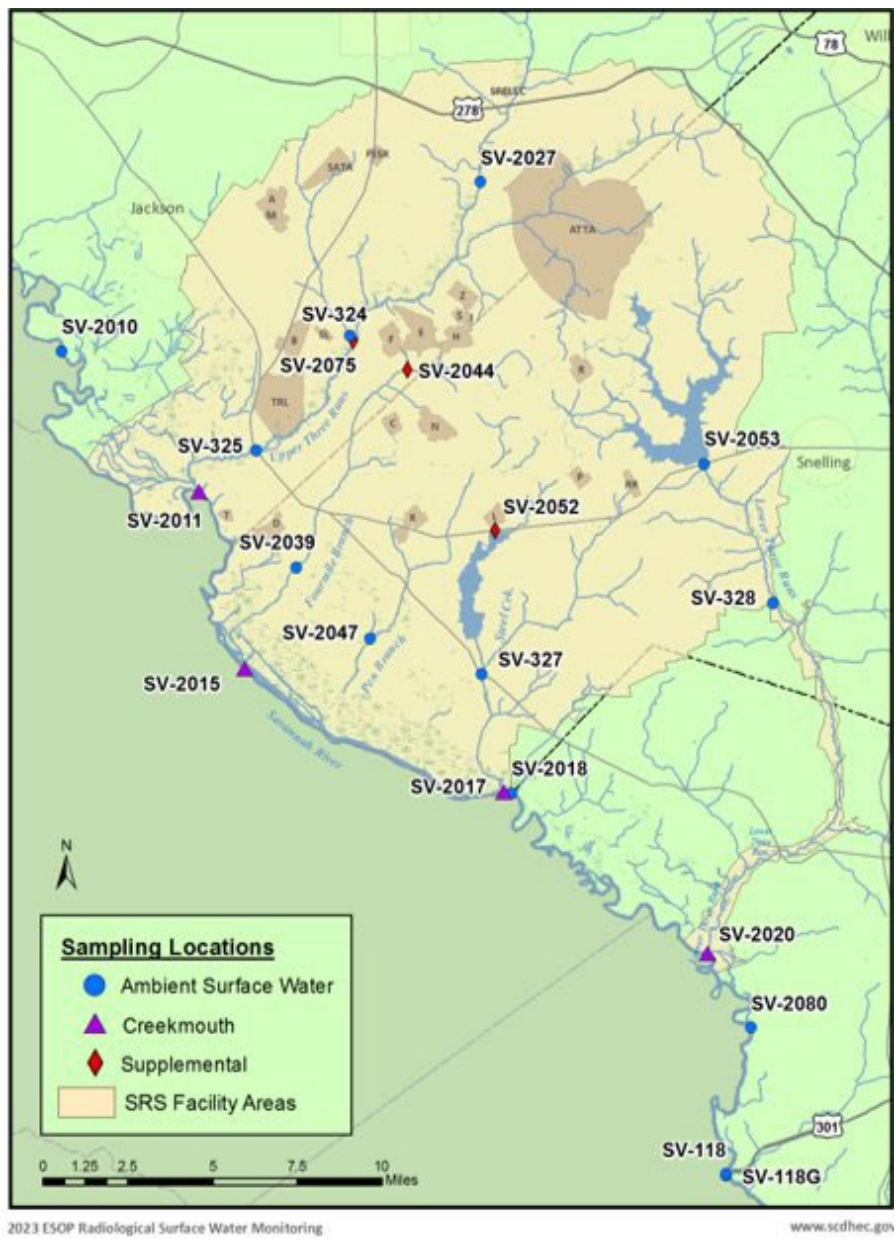
Treatment Facility

North Augusta, SC
June 25, 2016



Radiological Surface Water Monitoring



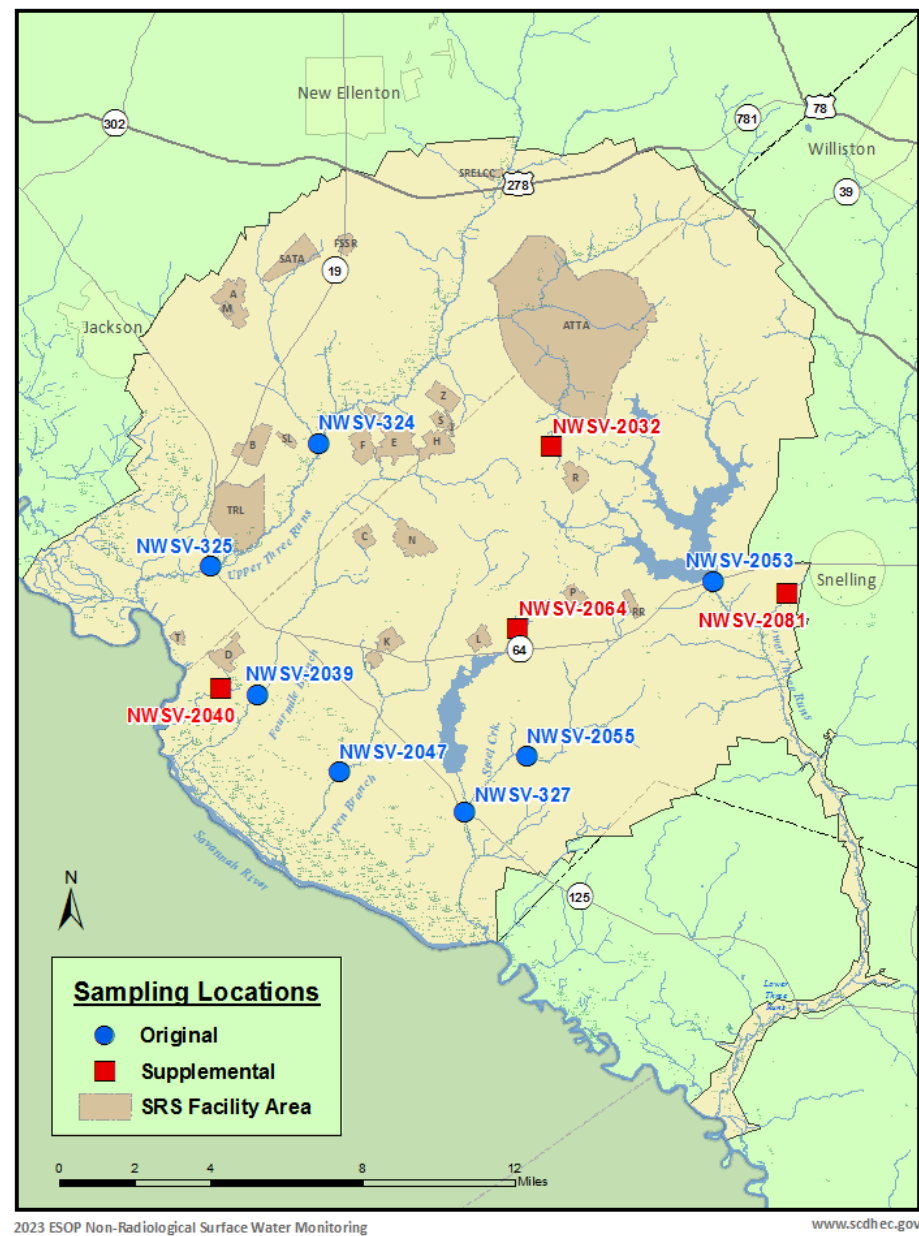


Non-Radiological Monitoring of Surface Water



Sample Parameters

- 💧 Temperature
- 💧 pH
- 💧 Dissolved Oxygen
- 💧 BOD
- 💧 Total Suspended Solids
- 💧 Turbidity
- 💧 *E. coli*
- 💧 Ammonia
- 💧 Nitrate/Nitrite
- 💧 Phosphorus
- 💧 TKN
- 💧 Alkalinity
- 💧 Cadmium
- 💧 Chromium
- 💧 Copper
- 💧 Iron
- 💧 Mercury
- 💧 Manganese
- 💧 Nickel
- 💧 Lead
- 💧 Zinc

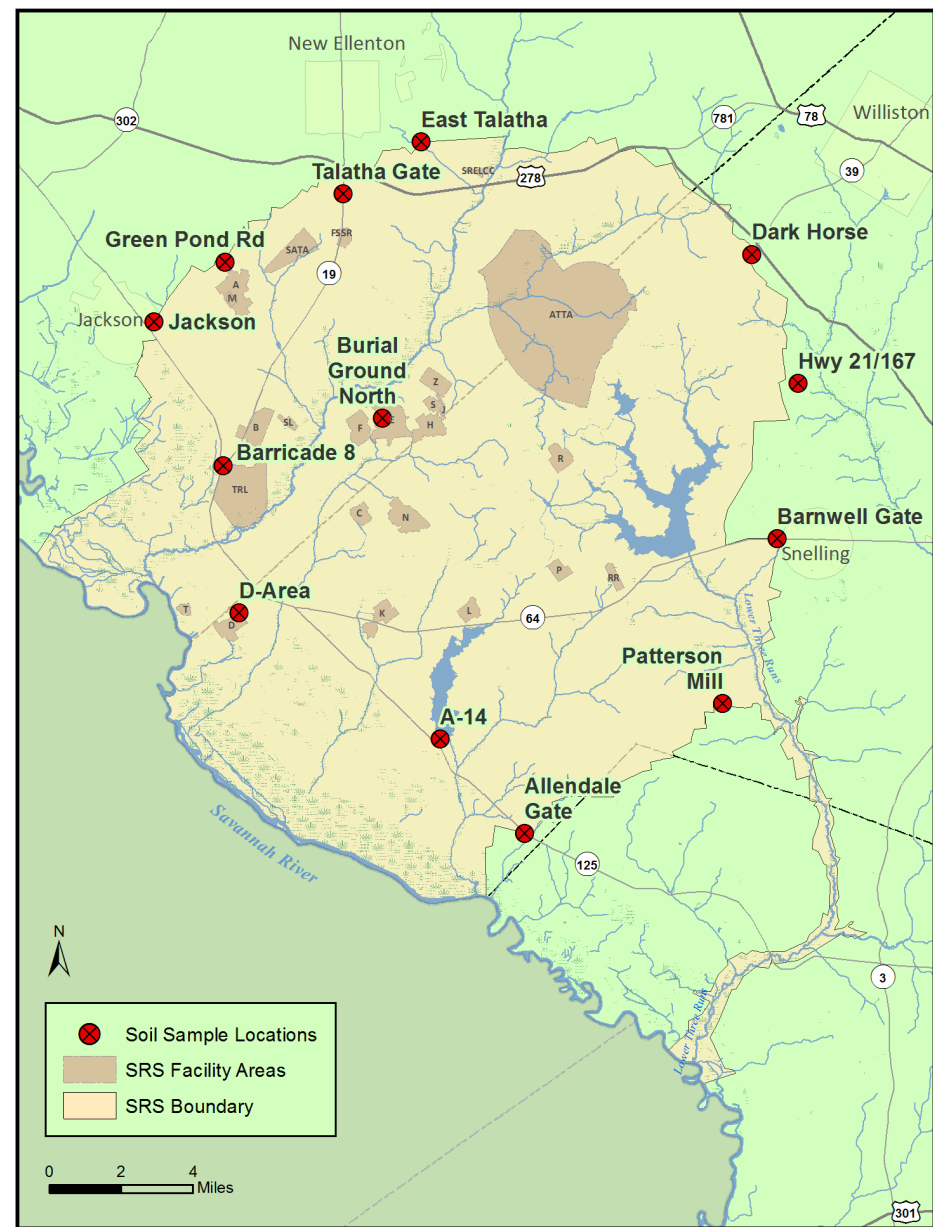


Sediment Monitoring



Soil Monitoring





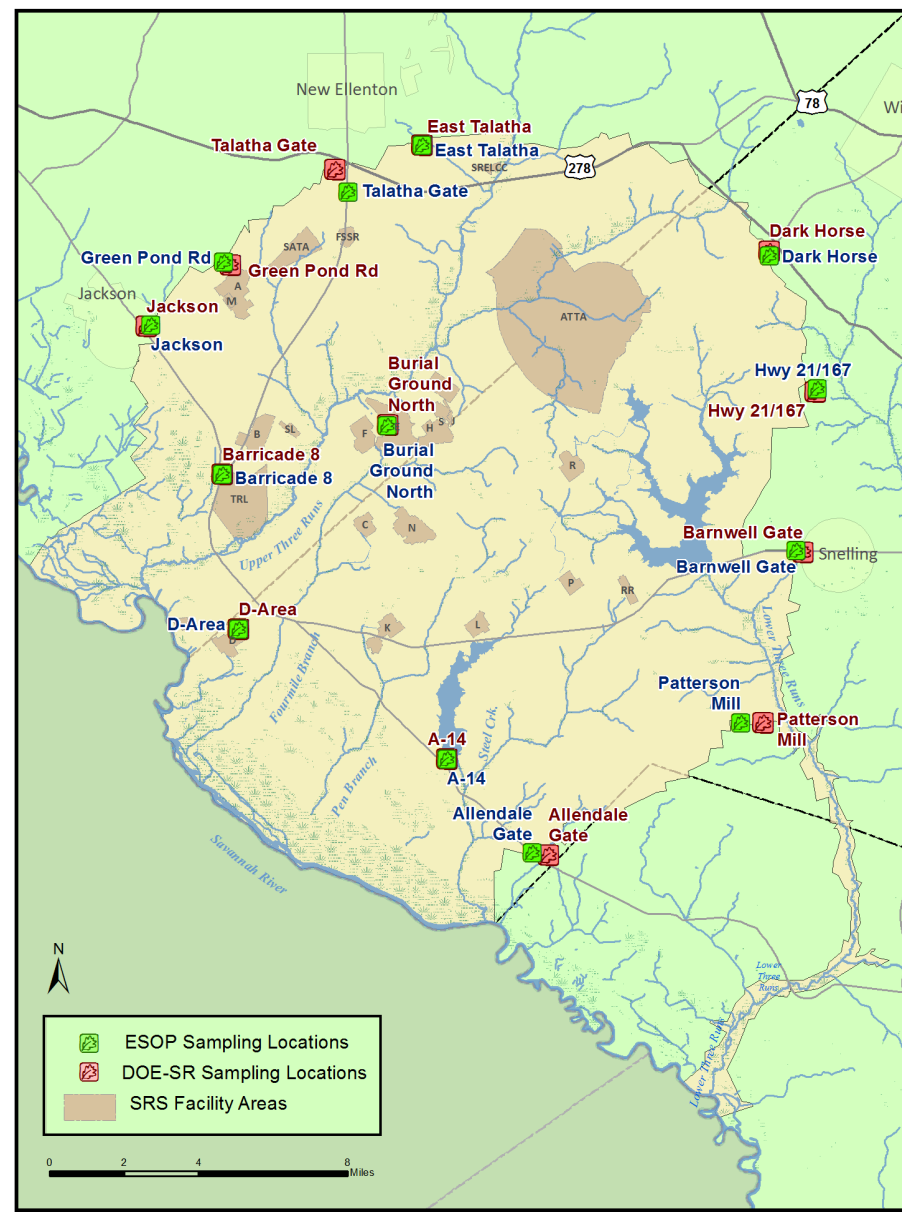
2023 ESOP Soil Monitoring Map

www.scdhec.gov

Terrestrial Vegetation Monitoring

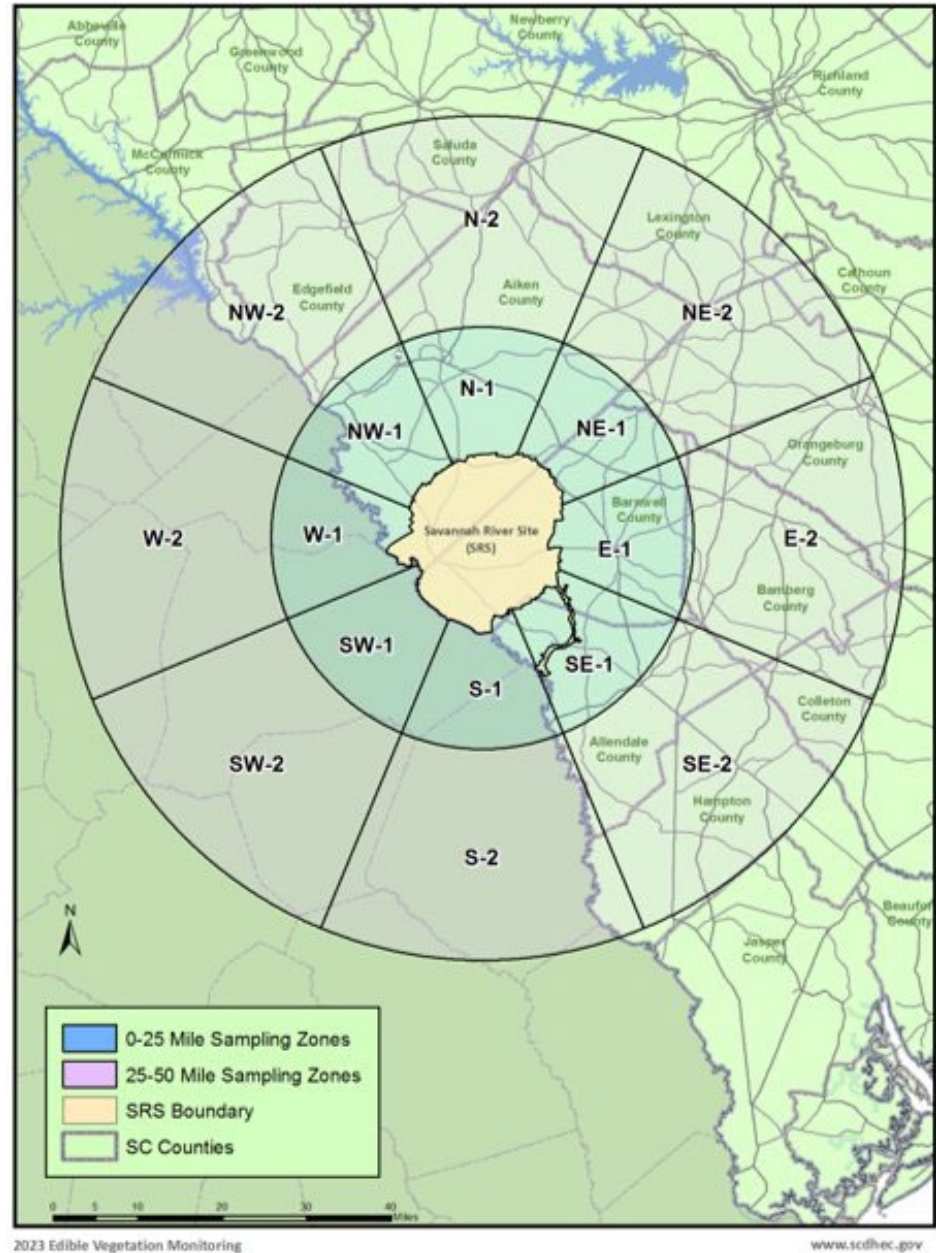


Bermuda Grass



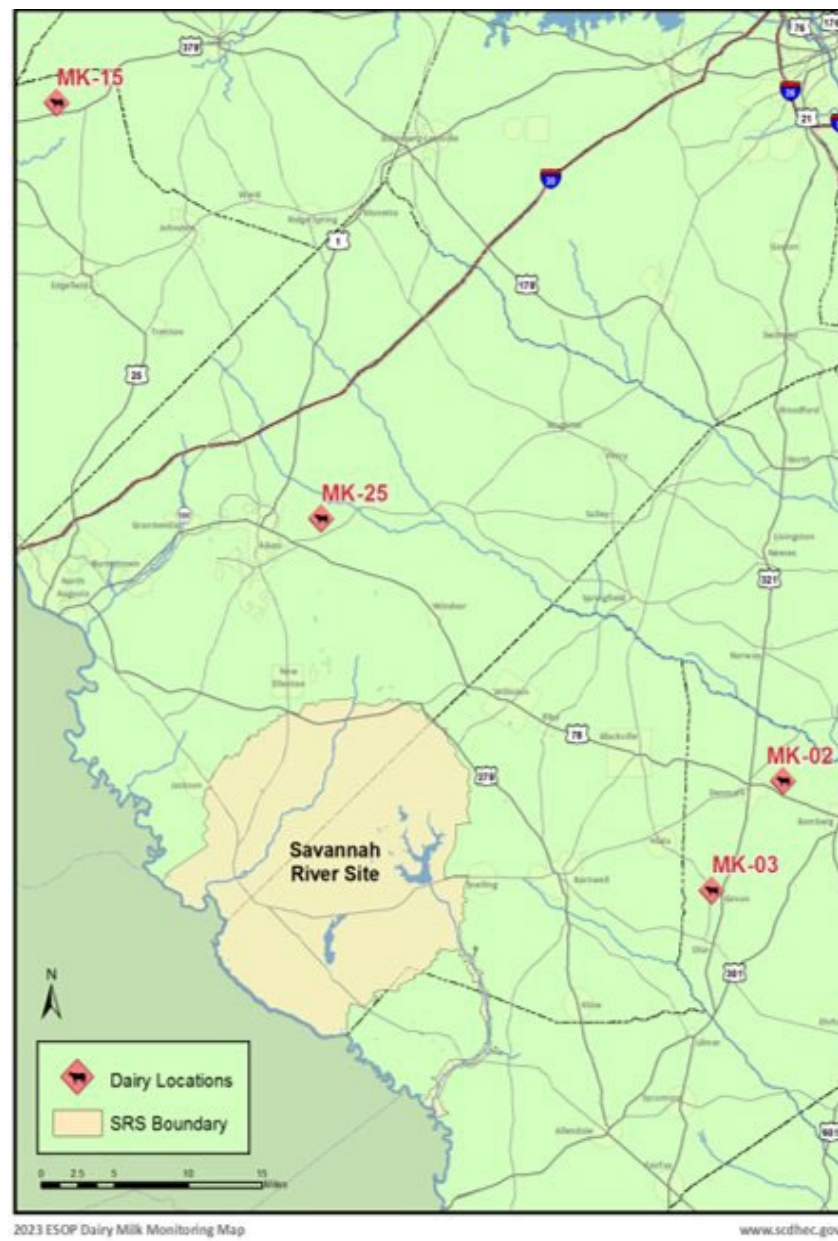
Edible Vegetation Monitoring





Milk Monitoring





Fish Monitoring



Freshwater Species:

Channel and Flathead Catfish

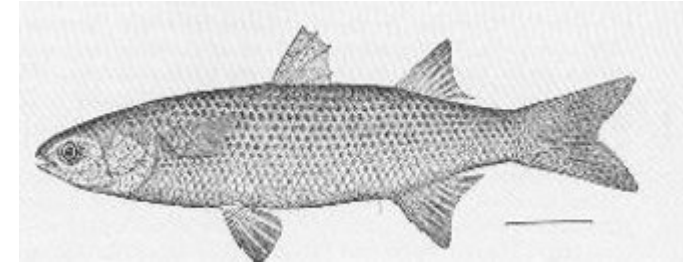


Largemouth Bass



Saltwater Species:

Striped Mullet

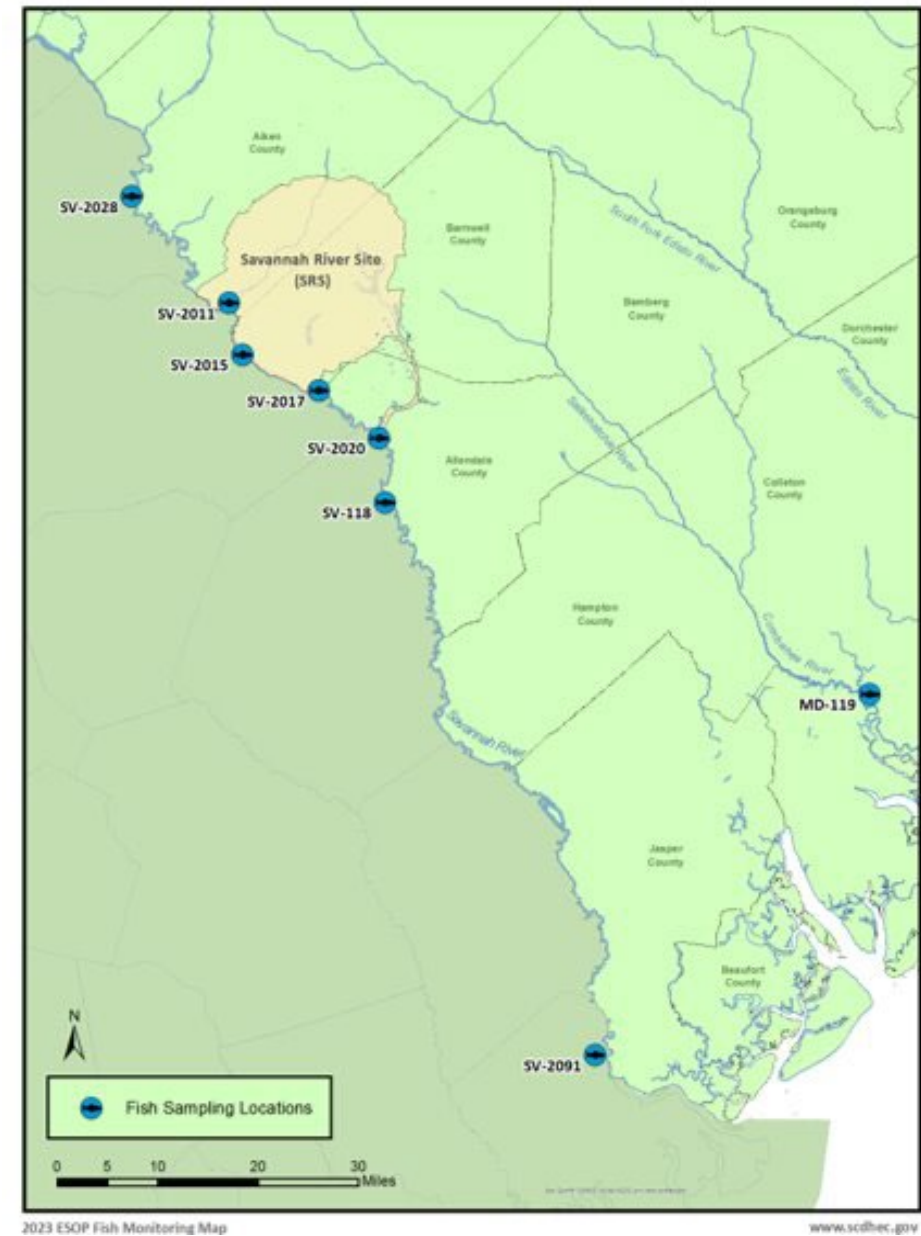


Red Drum



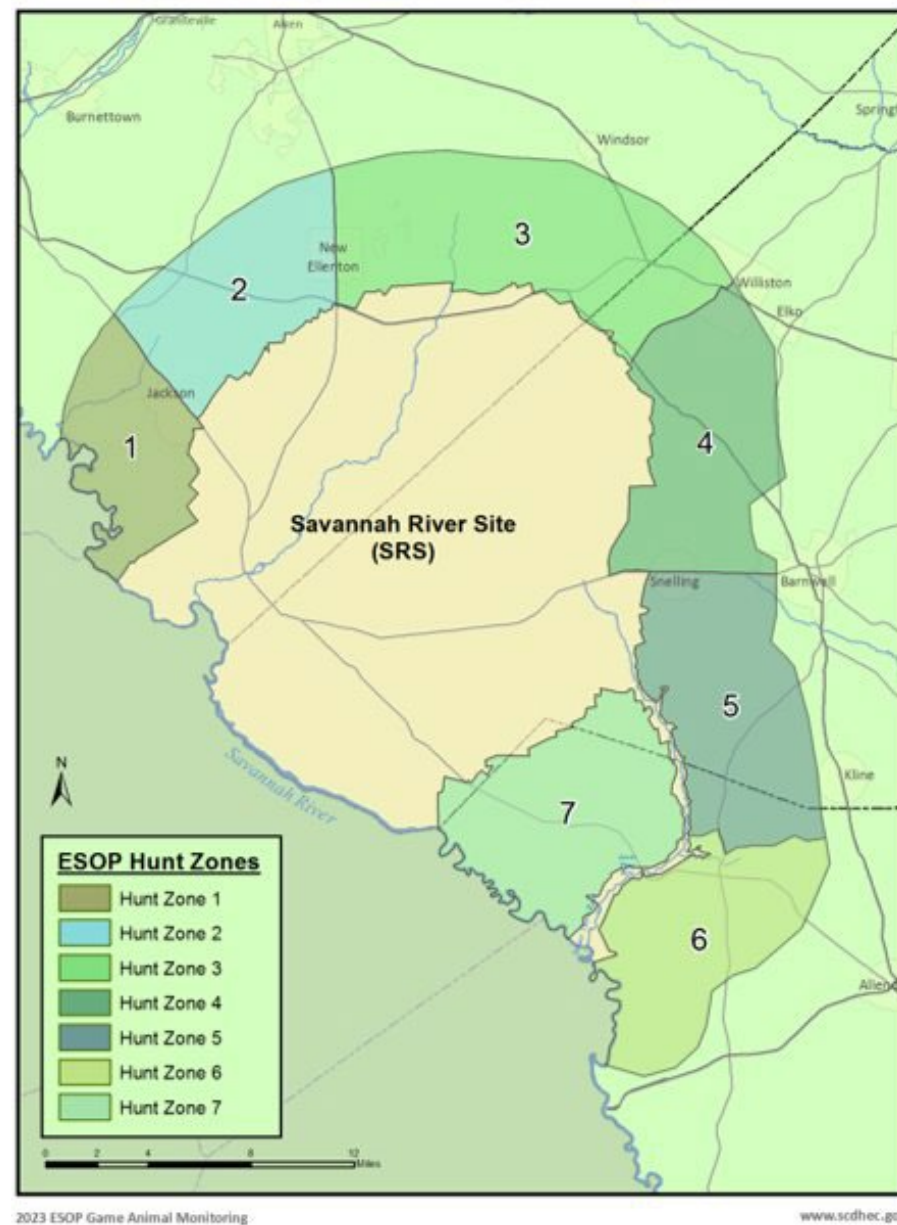
Sampling Locations

Sample ID	Location
SV-2028	New Savannah Bluff Lock and Dam (NSBLD)
SV-2011	Upper Three Runs Creek
SV-2015	Fourmile Branch
SV-2017	Steel Creek
SV-2020	Lower Three Runs Creek
SV-118	Highway 301
SV-2091	Highway 17 (saltwater)
MD-119	Combahee River between Beaufort and Colleton counties



Game Monitoring





Summary

- **Historically, SCDES results are comparable to DOE-SR's data**
- **SCDES will continue to monitor activity at SRS**

Public Outreach



ESOP Environmental Surveillance and Oversight Program 2022 DATA REPORT

CR-004111 12/23



Aiken Environmental Affairs Office
206 Beaufort Street, NE
Aiken, SC 29801







SC DEPARTMENT *of*
**ENVIRONMENTAL
SERVICES**

Get in touch

Madeleine Kellett // Environmental Health
Manager II / Public Outreach Coordinator

Midlands-Aiken Environmental Affairs Office
206 Beaufort St. NE
Aiken, S.C. 29801

Madeleine.Kellett@des.sc.gov

803.508.7595

des.sc.gov

@SouthCarolinaDES

